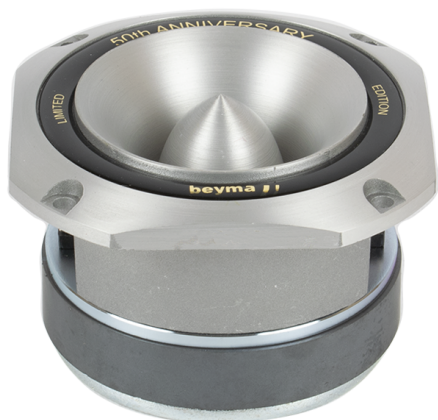


KEY FEATURES

- 1,5" (38,1 mm) aluminum voice coil
- Enhanced technology for higher power handling: 35 W_{AES}
- High sensitivity: 107 dB (1W / 1m)
- Extended frequency range: 5 - 20 kHz
- Precise directivity: 40° conical
- Aluminum diaphragm
- Designed for outdoor applications
- Designed for long-throw high frequency applications



TECHNICAL SPECIFICATIONS

Rated impedance	8 Ω
Minimum impedance	7,9 Ω
D.C. resistance	6,3 Ω
Power capacity ¹	35 W _{AES} above 5 kHz
Program power ²	70 W above 5 kHz
Sensitivity ³	107 dB 1W / 1m @ Z _N
Frequency range	5 - 20 kHz

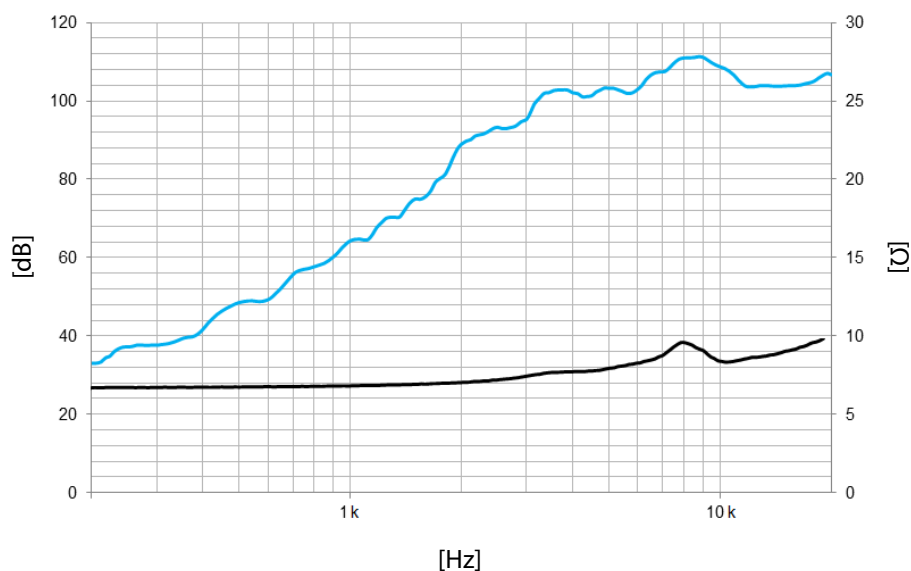
Recommended crossover	5 kHz or higher (12 dB/oct min.)
Dispersion H x V	40° conical
Voice coil diameter	38,1 mm 1,5 in
Flux density	1,55 T
BI factor	5,2 N/A

Notes:

¹ The power capacity is determined according to AES2-1984 (r2003) standard.

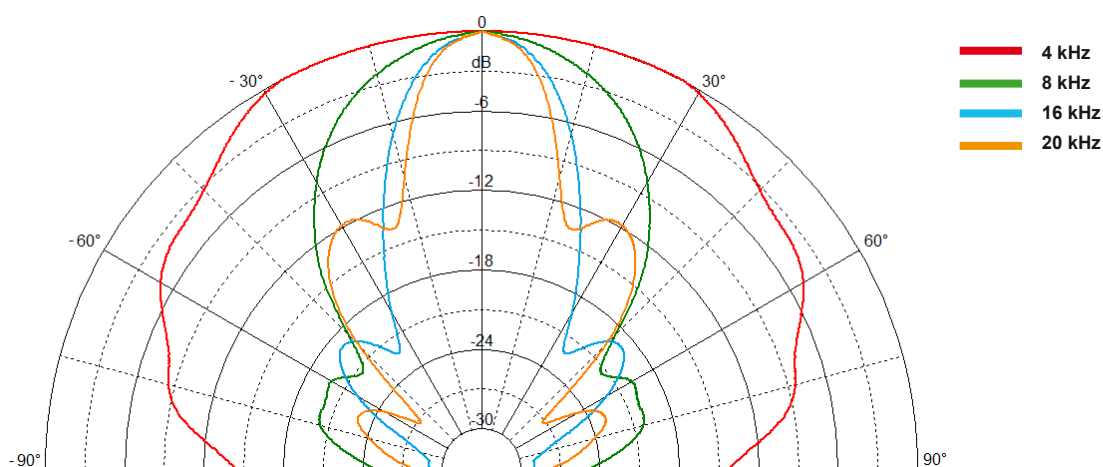
² Program power is defined as the transducer's ability to handle normal music program material.

³ Sensitivity was measured at 1m distance, on axis, with 1W input, averaged in the range 5 - 10 kHz



Note: On axis frequency response measured at 1W / 1m

POLAR PATTERN



MOUNTING INFORMATION

Overall diameter	102 x 102 mm	4,0 x 4,0 in
Bolt circle diameter	107 mm	4,2 in
Baffle cutout dimensions	92 mm	3,6 in
Depth	71 mm	2,8 in
Net weight	1,6 kg	3,5 lb
Shipping weight	1,7 kg	3,7 lb

DIMENSION DRAWING

